

15 Celia Crescent, Ashford, Surrey TW15 3NW



Offers Over £425,000 Freehold



An opportunity to purchase this spacious 3 bedroom extended semi-detached bungalow in need of updating having enormous potential to provide a desirable home in a favoured cul-de-sac location just minutes from Fordbridge Park.

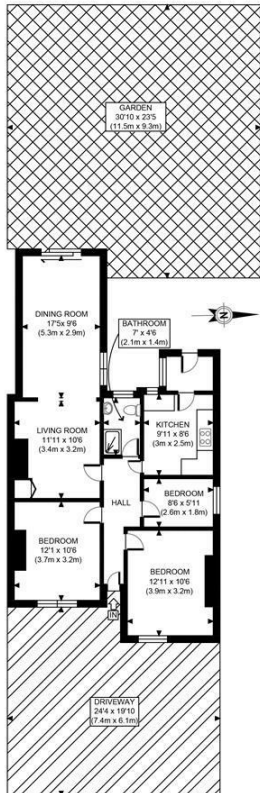
15 Celia Crescent, Ashford, Surrey TW15 3NW

FOR SALE

An excellent opportunity to purchase a 3 bedroom semi detached bungalow in need of refurbishing. The entrance hall has doors to 3 bedrooms, bathroom , kitchen and an extended lounge /dining room with access to a sunny aspect garden. The property is in basic condition with the potential for a buyer to re-instate into a splendid home with comfortable living accommodation of their choice. The rear garden is sunny aspect with a former garage ideal for garden tools/motor bike and general storage. The front garden has a parking space.

LOCATION

Set in a desirable cul-de-sac within a very short walk of delightful Fordbridge Park and the River Ash. Both Staines and Ashford town centres with railway stations are also close to hand together with access to the M3 and M25 motorways.



Energy Efficiency Rating		Environmental Impact (CO ₂) Rating	
Very energy efficient - lower running costs	Current	Very environmentally friendly - lower CO ₂ emissions	Current
(92 plus) A		(92 plus) A	
(81-91) B		(81-91) B	
(69-80) C		(69-80) C	
(55-68) D		(55-68) D	
(39-54) E		(39-54) E	
(21-38) F		(21-38) F	
(1-20) G		(1-20) G	
Not energy efficient - higher running costs		Not environmentally friendly - higher CO ₂ emissions	
England & Wales	EU Directive 2002/91/EC	England & Wales	EU Directive 2002/91/EC

It is our aim to provide particulars that are both accurate and reliable but they are not guaranteed and would not form part of any offer or contract. Please contact us if you require clarification and we would be happy to assist. Please also note that the appliances and heating system have not been tested and therefore, no warranties can be given as to their condition.